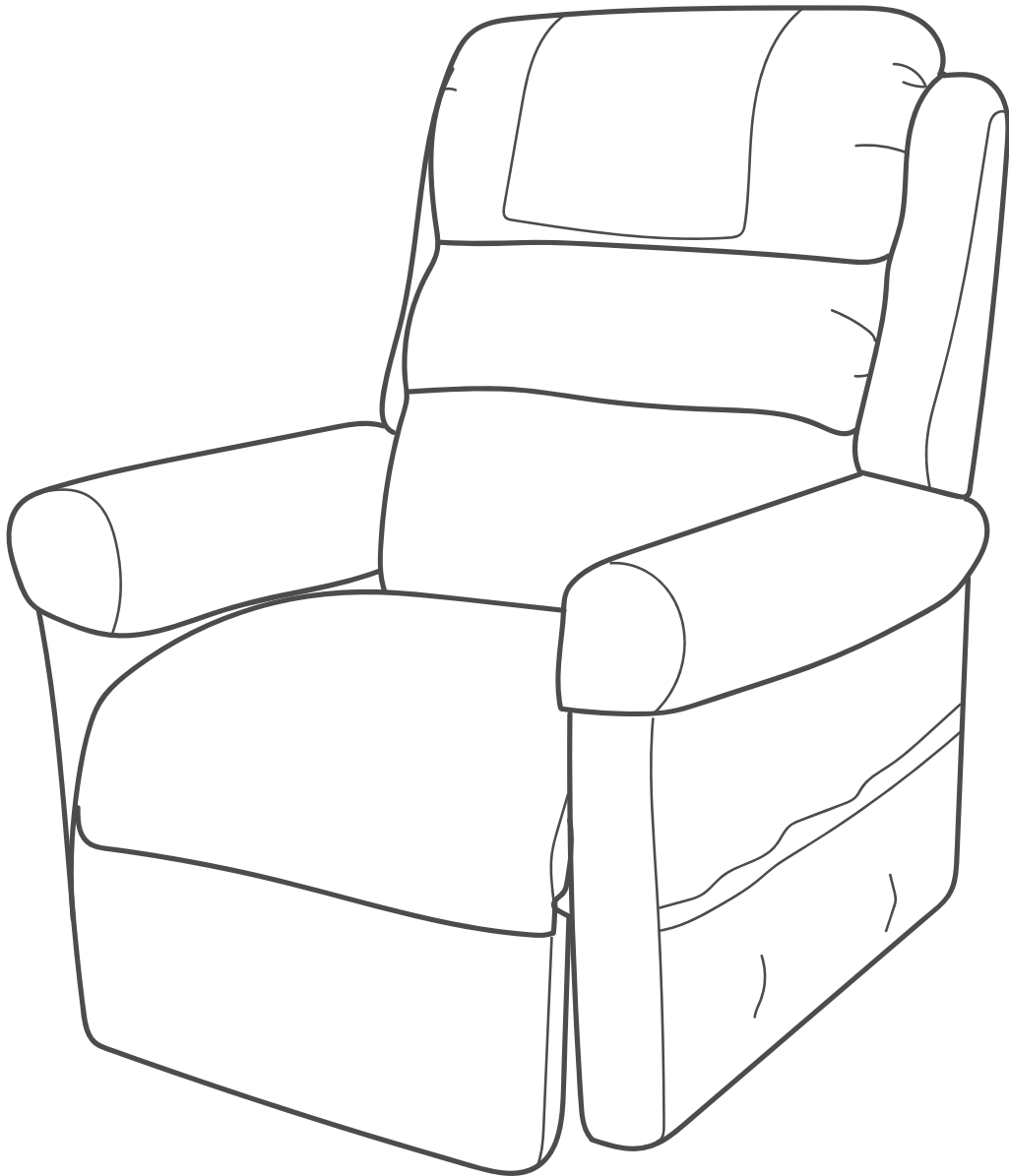


Riser Recliners

USER MANUAL

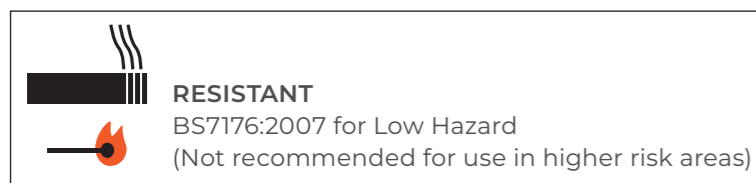


This product has been designed to maximize relaxation and sitting comfort in a range of adjustable positions. Riser Recliners are suitable for indoor use only.

It is important that you read this user manual carefully before using your new Riser Recliner.

TABLE OF CONTENTS

1. Assembly/Disassembly	4
2. Operation	6
3. Care & Maintenance	10
4. Warranty	11
5. Specifications	11



This electrically adjustable Riser Recliner is considered motion furniture for use in private residence.

This Riser Recliner is not a medical device.

© Aidacare Limited 2024

No part of this user manual may be copied, distributed, reproduced, scanned or stored on any electronic database, whether in whole or in part in any form or by any means.

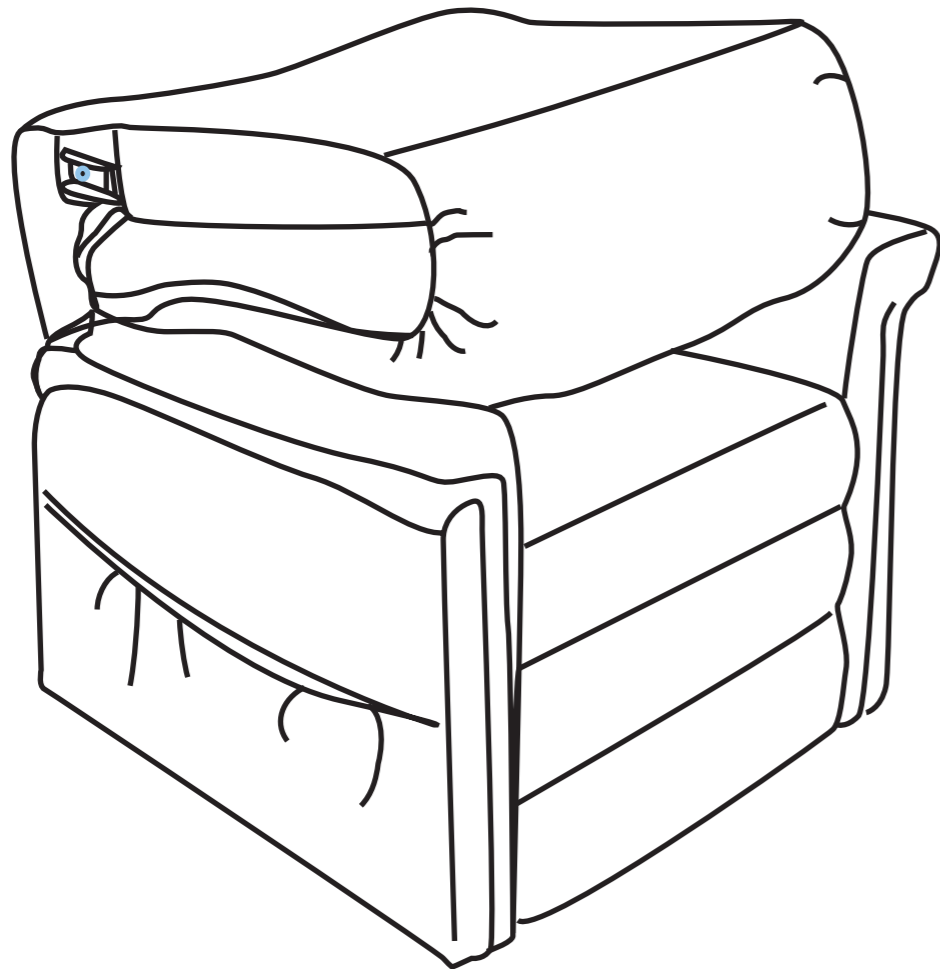
Due care has been taken to ensure all the information contained in this user manual is correct at the time of printing. All measurements, pictures, colours and weight capacities are to be used as a guide only. We reserve the right to modify the design or appearance of any product displayed in this user manual without prior notice.

1. ASSEMBLY/DISASSEMBLY

Your Riser Recliner may require some assembly before initial use. It may also require disassembly to make servicing the chair more convenient. If your Riser Recliner is a Knock-Down (KD) model, follow the instructions in "Riser Recliner Set-up."

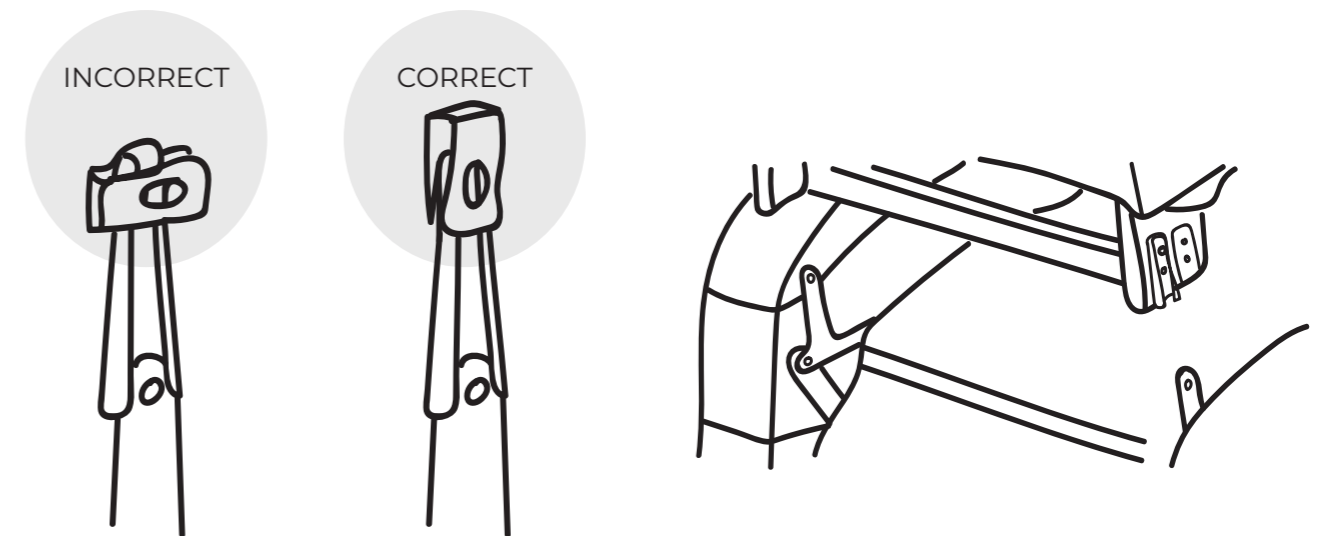
RISER RECLINER SET-UP

KD models will arrive in the knock-down position.

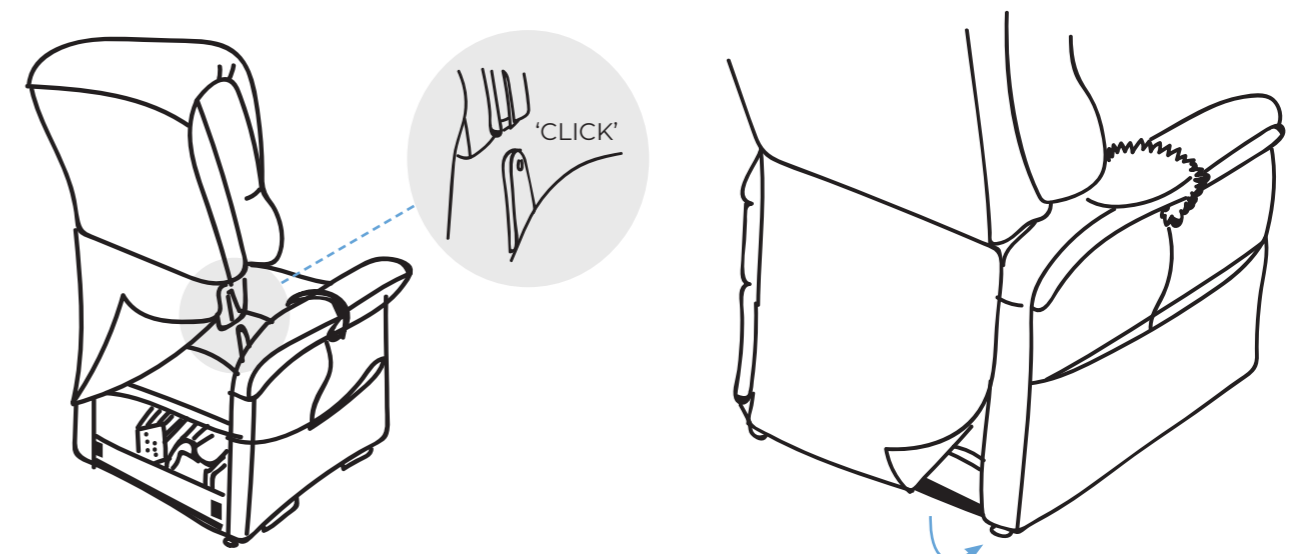


Knock-Down (KD) Position

Follow these steps to assemble the Riser Recliner:



- 1 Remove the packaging from the back portion of the chair and check that the locking clip is in the vertical position. Reposition if necessary.
- 2 Slide the left and right KD sleeves of the chair-back onto the KD connections on the arms and seat of the chair.



- 3 Push firmly on the top of the chair-back to lock into position. Listen for a click on each side to ensure the chair-back is locked in properly.
- 4 Attach the chair-back to the hook and loop velcro strips on the bottom of the chair base.

NOTE: Pull up on the chair-back to ensure that it is locked in place. If the back can be disconnected or appears to become loose, then repeat steps mentioned above.

2. OPERATION

2.1 SAFE OPERATING PRECAUTIONS

There are certain precautions that should be taken during the operation of your Riser Recliner. Read and follow these precautions carefully in order to ensure safe recliner operation and to prevent injury and/or product damage.

- Plug the power lead directly into the electrical outlet. Do not use an extension lead!
- Do not place anything (e.g. a drinking glass) on top of or near the external transformer
- If the external transformer box or hand control requires cleaning, unplug the power lead from the electrical outlet and use a clean, dry cloth or lightly dampened cloth. Dry completely before plugging the power lead back into the electrical outlet
- Periodically check the hand control and all power leads for visible damage
- Keep the hand control away from all heated surfaces
- Ensure the hand control is out of the way before sitting in the chair
- Keep children and pets away from all moving parts while operating the Riser Recliner
- Do not allow children to play on or operate the Riser Recliner. Only the occupant should operate the Riser Recliner.
- Avoid pinch points, such as the lift and scissor mechanisms. Keep hands and feet clear of these areas
- Always leave the Riser Recliner in an upright and closed position when not in use
- Do not sit or stand on the footrest
- Do not “drop or collapse” onto the seat when transitioning from standing to sitting. User should gently lower themselves into the chair, especially when it is in a raised or partially raise position. Dropping onto the seat can cause structural damage to the seat support springs and frame. This type of use will void the chair warranty.



PROHIBITED! Do not place objects under the Riser Recliner, make sure area is clear of obstructions, including pets and small children during operation.

WARNING! Prevent potential equipment damage! Do not place the external transformer under the Riser Recliner.



WARNING

WARNING! Do not cover the external transformer. Keep the transformer in an open well-ventilated area free from foreign material/debris to ensure proper operation.

2.2 HAND CONTROL OPERATION

Depending on Riser Recliner model, the hand control may be equipped with switches that control the movement of the chair-back, chair base and footrest.



WARNING

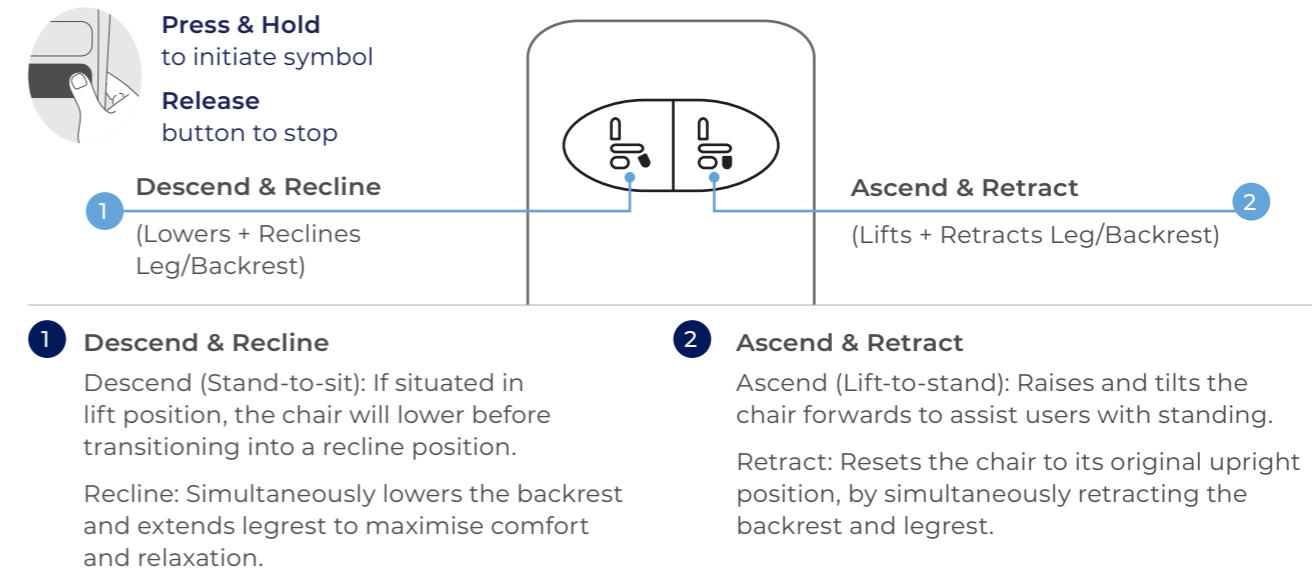
WARNING! Do not lean on or apply downward force to the chair-back when the Riser Recliner is in the fully reclined position, doing so could cause the Riser Recliner to tip, resulting in personal injury and/or product damage.



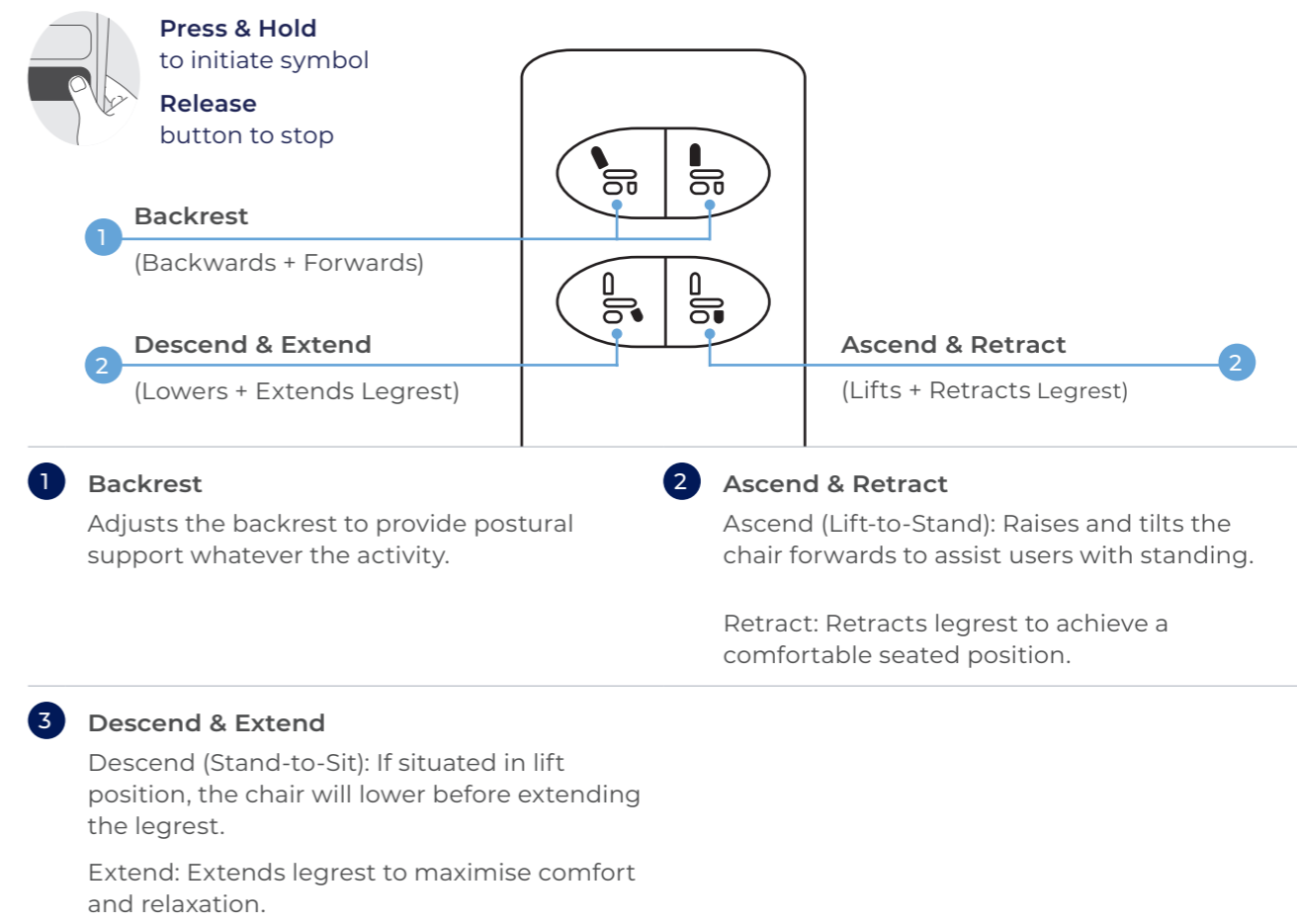
WARNING

WARNING! Do not use the footrest as a seat, or for purposes outside its intended use. Doing so could cause instability in the Riser Recliner and place undue stress on Riser Recliner components, resulting in personal injury and/or product damage.

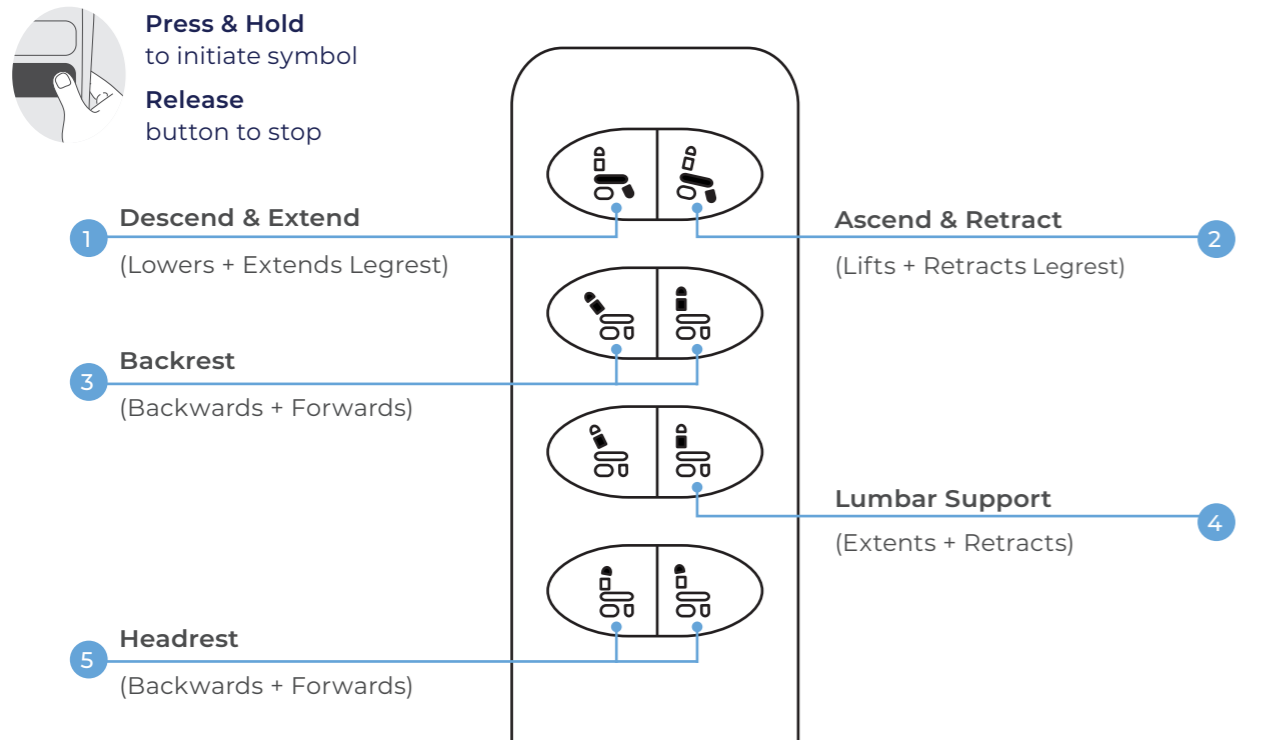
2.3 SINGLE ACTION – SPACE SAVER MODEL



2.4 DUAL ACTION MODEL



2.4 MULTI-ACTION MODEL



1 Descend & Extend

Descend (Stand-to-Sit): If situated in the lift position, the chair will lower before extending the legrest.
Extend: Extends legrest to maximize comfort and relaxation.

2 Ascend & Retract

Ascend (Lift-to-Stand): Raises and tilts the chair forward to assist users with standing.
Retract: Retracts legrest to achieve a comfortable seated position.

3 Backrest

Adjusts the backrest to provide postural support for any activity.

4 Lumbar Support

Adjusts the inbuilt lumbar cushion to provide tailored lower back support.

5 Headrest

Adjusts the headrest to help alleviate neck muscle strain, providing optimal support while reading or watching TV.

2.5 CORRECT AND INCORRECT USE GUIDE

NOTE: Chairs shown are for illustrative purposes only and may not be reflective of the specific chair model purchased.

DOS

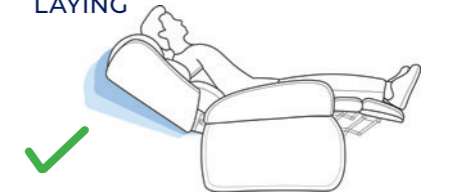
SITTING



DO sit upright and centrally aligned in the chair.



LAYING



DO lie centrally and flat on the users back.

DO NOTS

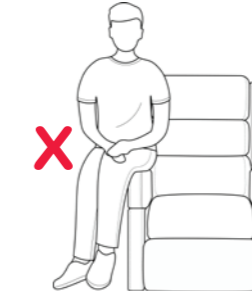


Misuse may injure the user, cause pressure and/or skin tear related issues, as well as damage the product.

SITTING



DO NOT sit skewed to one side of the chair.



DO NOT sit on the armrest.



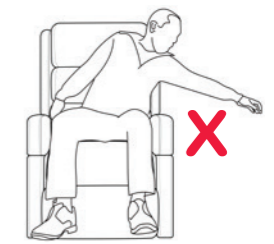
DO NOT distribute excess weight on the backrest.



DO NOT distribute excess weight on the armrest.



DO NOT sit on the footrest when extended.



DO NOT reach to the side.



DO NOT lean forward.

LAYING



DO NOT lie on the side.



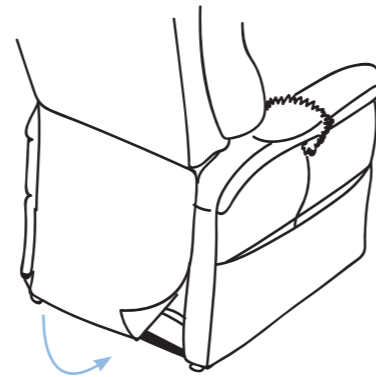
DO NOT reposition whilst on side.

3. CARE & MAINTENANCE

Your Riser Recliner will require routine maintenance checks. You can perform some of these checks, but others may require assistance from an authorised dealer. By following the maintenance checks in this section as scheduled, you can help ensure your Riser Recliner gives you years of trouble-free operation. If you have any questions regarding your Riser Recliner's care, contact your authorised Dealer.

3.1 FABRIC AND UPHOLSTERY CARE

Inspect the fabric on a regular basis for any pulls, tears or gaps.



Fabric Care instructions label.

FABRIC AND UPHOLSTERY CARE CONTINUED



WARNING

WARNING! Fabric should not be allowed to come in direct contact with any type of heat source (e.g. a heater or cigarette). Personal injury or fire damage may occur.



WARNING

WARNING! Do not smoke while seated in or using this Riser Recliner. Despite this product conforming to the relevant UK regulations for cigarette and match ignition, carelessness causes fire. Smoking will always present a risk to the user as other materials and items in the immediate vicinity of the chair may be combustible leading significant danger and risk of death to the user and others in the building.

- Do not leave lit smoking products unattended (examples include but are not limited to, cigarettes, cigars, rolling tobacco)
- Ashtrays should be positioned a safe distance from the Riser Recliner
- Always check to ensure cigarettes are completely extinguished before disposal

PLEASE NOTE:

- Do not use solvent-type cleaners to spot clean.
- Do not saturate the fabric.
- Prevent damage to the fabric; do not expose the Riser Recliner to direct sunlight.

ELECTRONICS CARE

- Inspect all electrical cables to make sure they are not damaged or frayed.
- If damage is present, unplug the Riser Recliner and contact your authorised Dealer for service.
- Keep all electronics free from moisture and temperature extremes.
- Riser Recliners are intended for indoor use only!



WARNING

WARNING! Even though the Riser Recliner has passed the necessary testing requirements for ingress of liquids, you should keep electrical connections away from sources of dampness, including direct exposure to water or bodily fluids and incontinence. Check electrical components frequently for signs of corrosion and replace as necessary.



WARNING

WARNING! Plastic bags are a suffocation hazard. Dispose of plastic bags properly and do not allow children to play with them.

4. WARRANTY

Riser Recliners come with warranty (components) detailed below: Please keep purchase invoice as proof of warranty commencement.

Watego & Cottlesloe

2 YEARS WARRANTY
Electronics, Chair Frame & Mechanism

1 YEAR WARRANTY
Fabric, Upholstery & Hand Control

Whitehaven

5 YEARS WARRANTY
Electronics, Chair Frame & Mechanism

1 YEAR WARRANTY
Fabric, Upholstery & Hand Control

IMPORTANT INFORMATION

Improper usage voids warranty. Consult the user manual for guidelines. Labour and service charges are at the discretion of your Dealer.

5. SPECIFICATIONS

	SEAT WIDTH	SEAT DEPTH	SEAT HEIGHT	BACKREST HEIGHT	SAFE WORKING LOAD
Watego Space Saver - Small	19"	18"	17"	27"	20st
Watego Space Saver - Medium	21"	20"	19"	29"	20st
Cottlesloe Dual Motor - Small	19"	18"	17"	27"	20st
Cottlesloe Dual Motor - Medium	21"	20"	19"	29"	20st
Whitehaven Four Motor - Medium	20"	20"	19"	28"	20st

AIDACARE LIMITED

Arcadia House, Maritime Walk,
Ocean Village, Southampton SO14 3TL
United Kingdom

01622 541235 | aidacare.co.uk

MADE IN UK

AUM37.4 2791124